



**CUSHMAN &
WAKEFIELD**

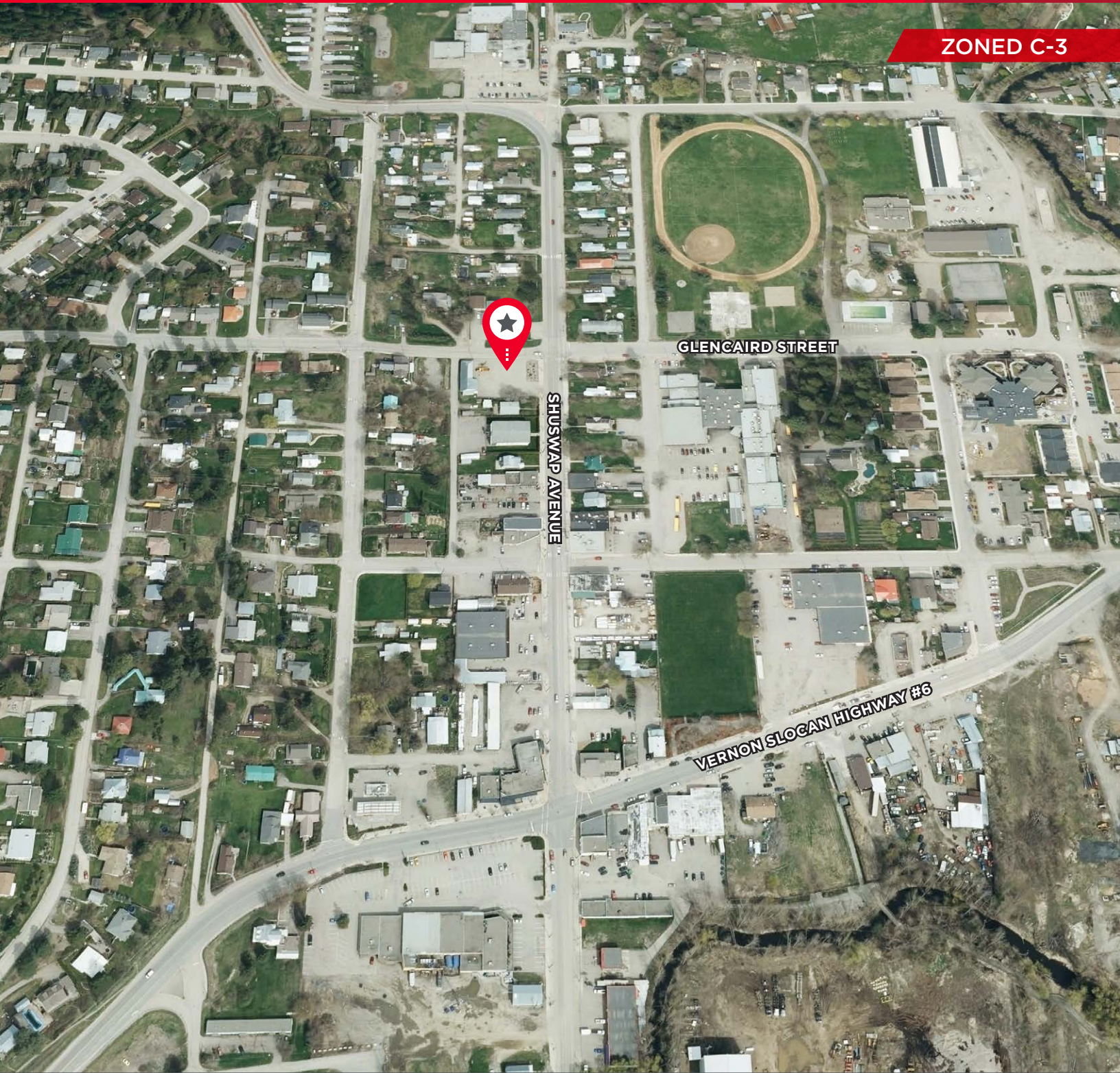
FOR SALE

2006 GLENCAIRD STREET

LUMBY, BC

2,386 SF BUILDING ON 0.423 ACRES

ZONED C-3



Bill Randall

Personal Real Estate Corporation
Senior Vice President
604 608 5967
bill.randall@cushwake.com

Rob Archibald

Royal LePage
1 250 717 6688
robarchibald@shaw.ca



CUSHMAN & WAKEFIELD

FOR SALE

2006 GLENCAIRD STREET

LUMBY, BC
2,386 SF BUILDING ON 0.423 ACRES

LOCATION

The community of Lumby, BC is located at the north end of the beautiful Okanagan Valley at the edge of the Monashee Mountains. It's only 25 km east of the city of Vernon and only fifty minutes from Kelowna International Airport. Downtown Lumby offers a healthy selection of business all within reach of a small town.

ZONING

C-3 (Mixed Commercial Zone)

LEGAL DESCRIPTION

Lot 11 & 12 District Lot 183
Osoyoos Division
Yale District Plan 729
PID: 012-110-493 & 012-110-507

BUILDING SIZE

2,386 sf

SITE SIZE

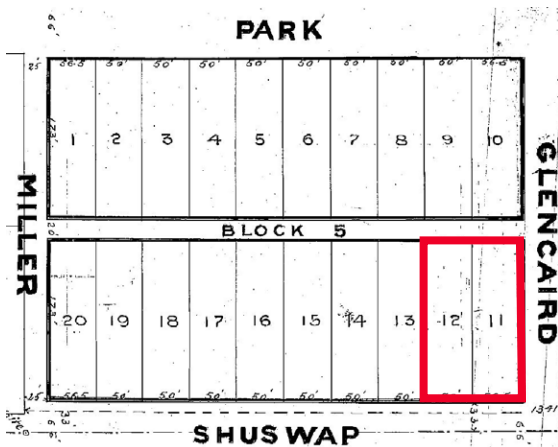
0.423 acres

ASKING PRICE

\$250,000

COMMENTS

Phase 1 environmental report available



Bill Randall

Personal Real Estate Corporation
Senior Vice President
604 608 5967
bill.randall@cushwake.com

Rob Archibald

Royal LePage
1 250 717 6688
robarchibald@shaw.ca

E.&O.E.: This communication is not intended to cause or induce breach of an existing agency agreement.

The information contained herein was obtained from sources which we deem reliable and, while thought to be correct, is not guaranteed by Cushman & Wakefield ULC 03/19 bg